

TRANG NHAN

[www.tncreativedesigns.com](http://www.tncreativedesigns.com)

Landscape Architecture

Arizona State University 2011



## Projects

### Hand Drafting

Arizona City Map Project -----	2
ASU Map Section Cuts -----	3
ASU Building extrusion -----	4

### Maps/Landform Analysis

Photo Collage Landform -----	5
Landform Abstraction: Map Elements -----	6
Interactive Wall Design -----	8
3D Modeling & Research: Olympic Sculpture Park -----	9

### Outreach Center

Site Plan & Floor Plan -----	10
Building Model -----	11

### Memorial Park

Site Plan -----	12
Section Cuts -----	13
Memorial Wall Rendering -----	14

### Residential

Site Plan Rendered -----	16
Landscape Design: Sections & hand sketch -----	17

### Harmon Park

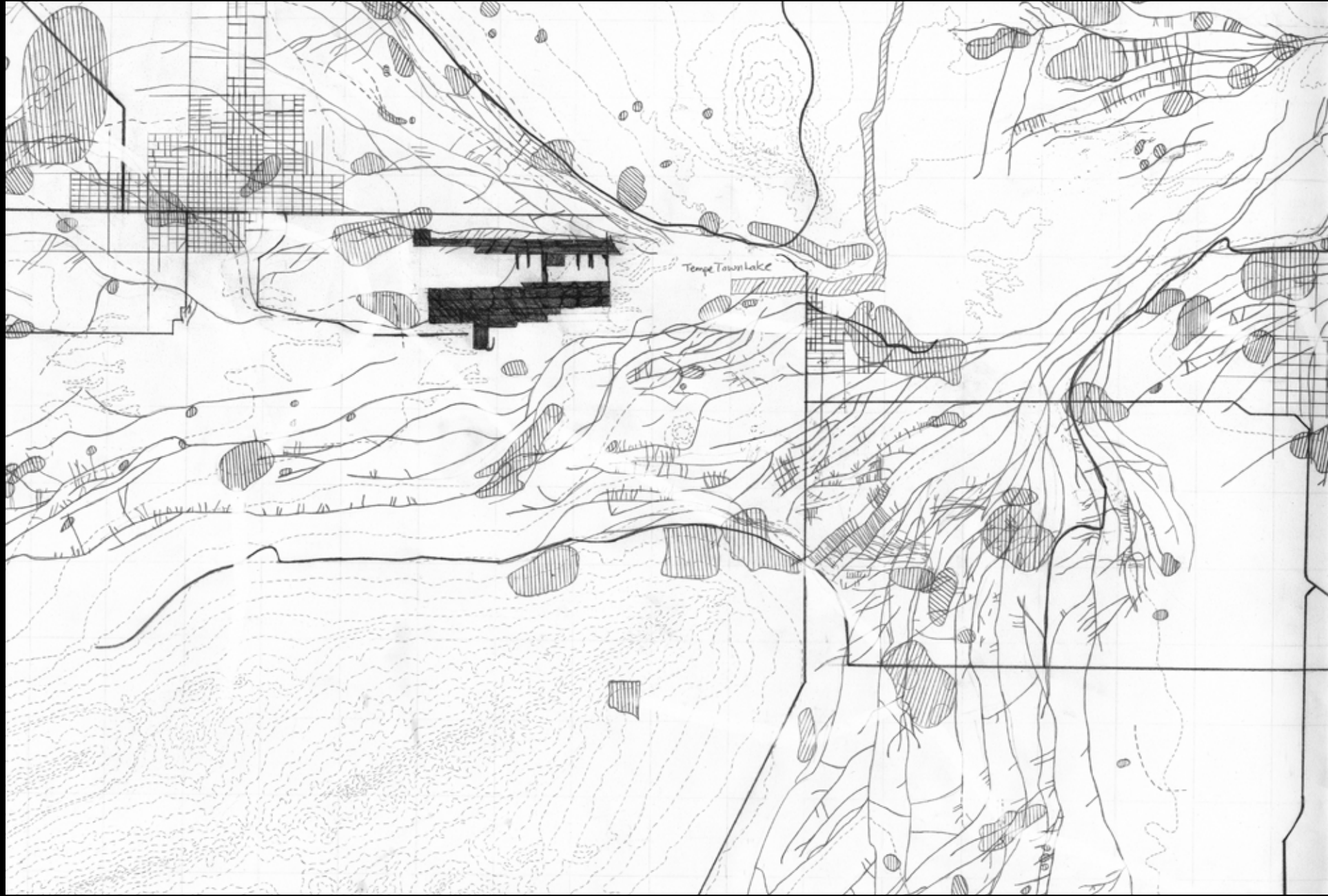
Site Plan Design -----	18
Section Cuts -----	19
Renderings -----	18

### Model Build

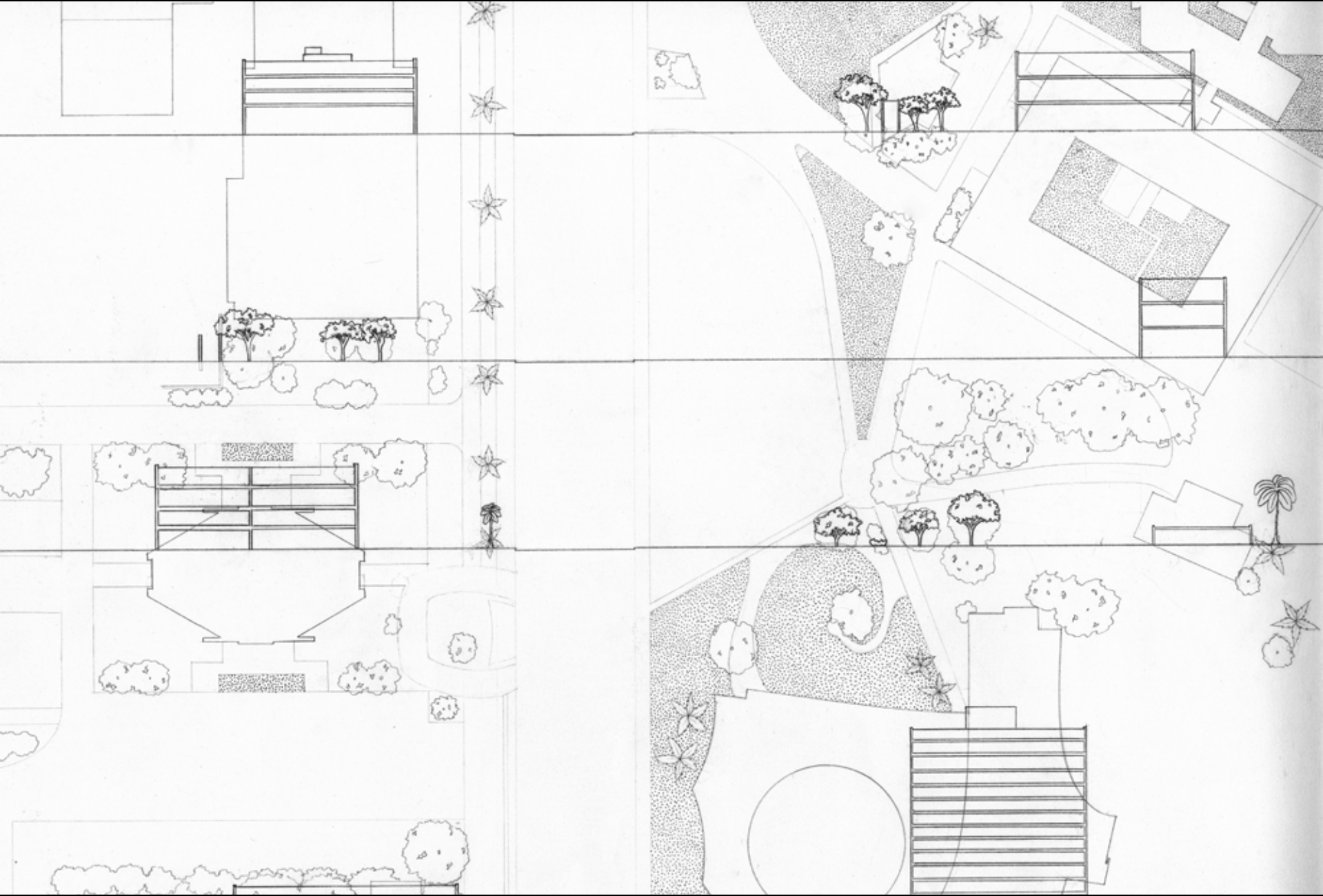
Commissioned land -----	22
Commissioned drainage design -----	24

### Renderings

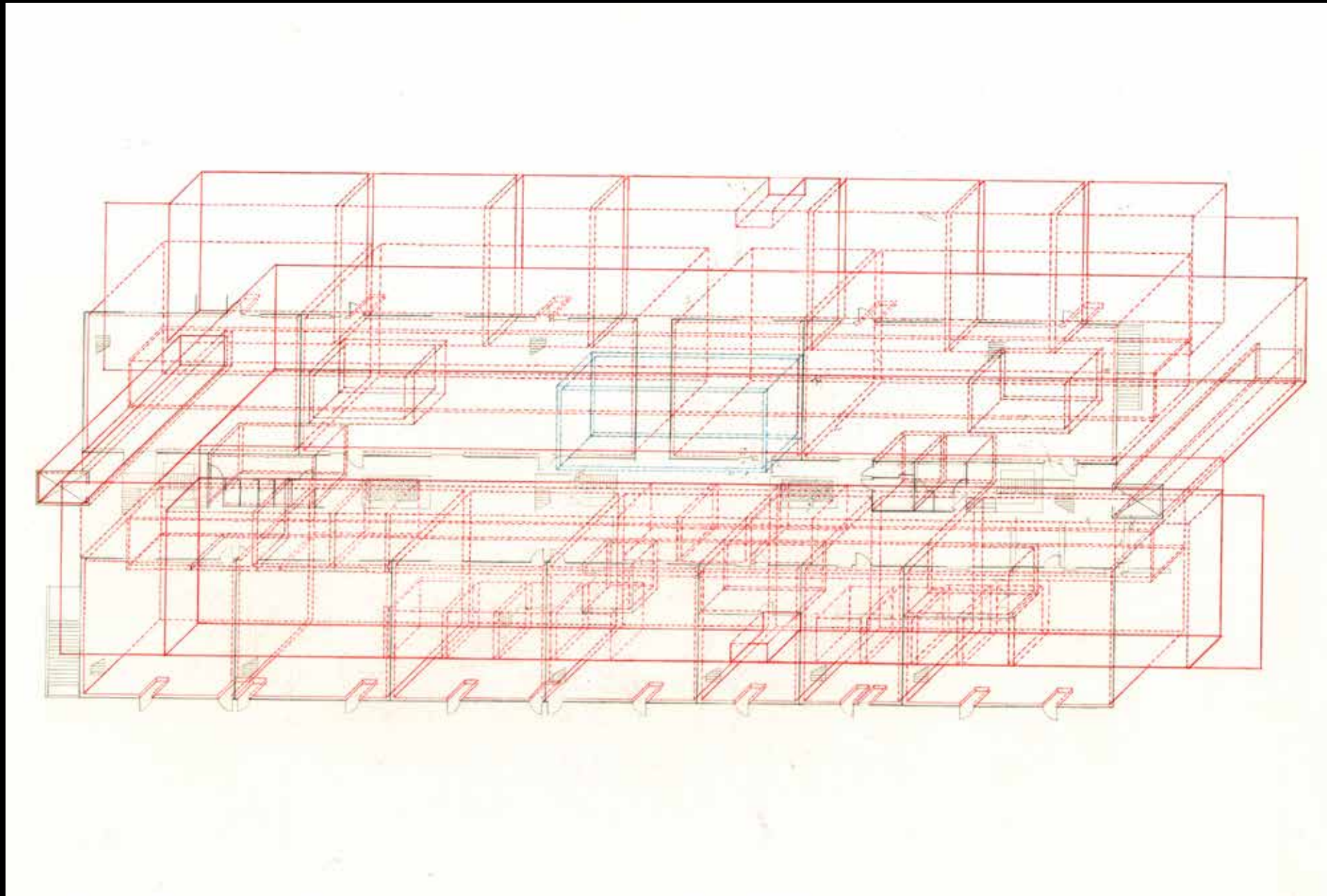
ASU Neeb Hall Landscape Design -----	26
Master Planning project -----	28



Hand Drafting: Arizona cities land information map, connection of cities with erased lines



Section cuts: ASU section cuts through dorm buildings and street vegetation with hand drafting techniques.



**Hand Drafting:** ASU building, red lines - Building extrusion, blue lines- new proposed space.



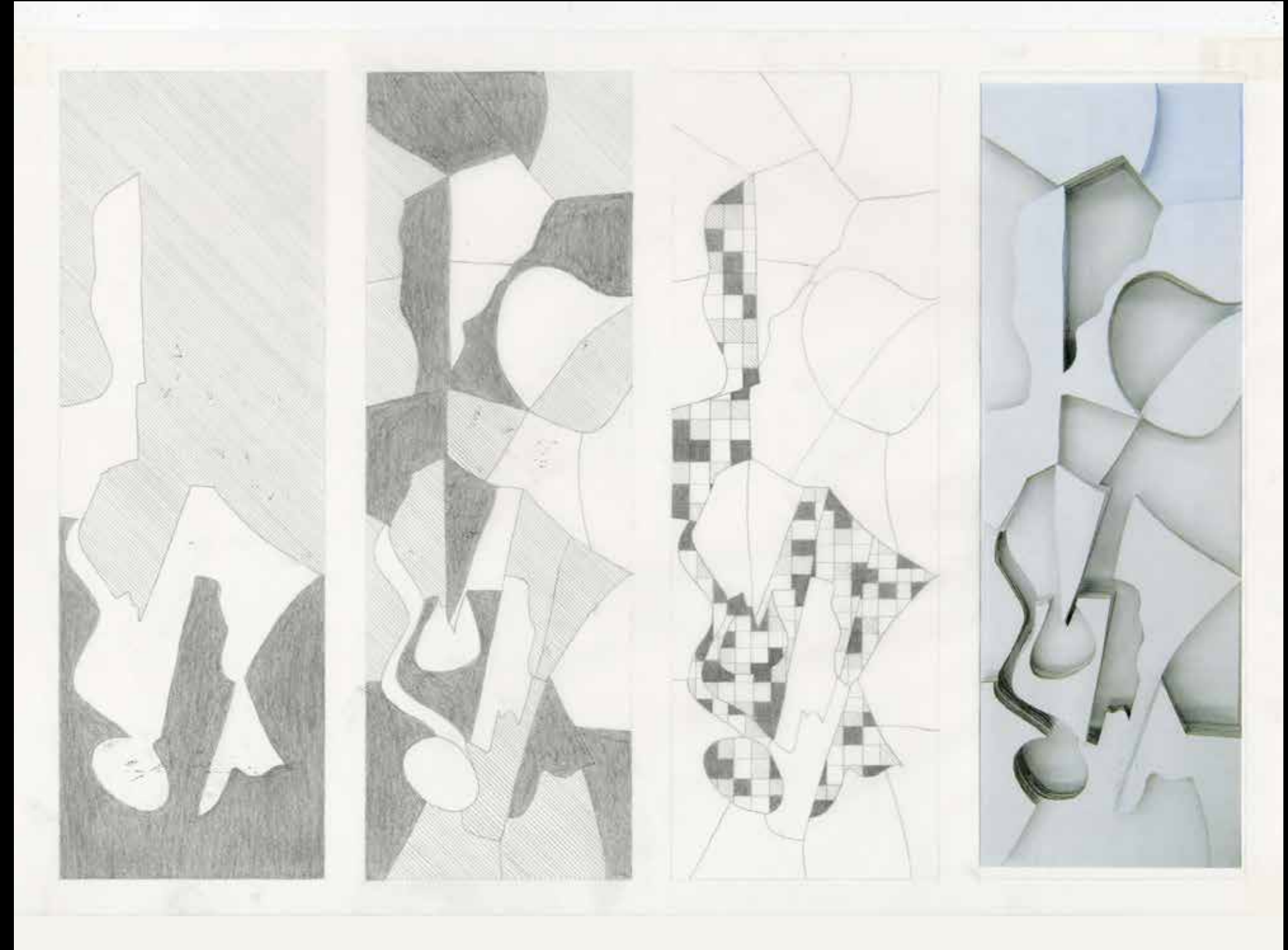
**Landform Exploration:** From a photo collage, to extracted negatives, to line connection, to form layers of elevation.

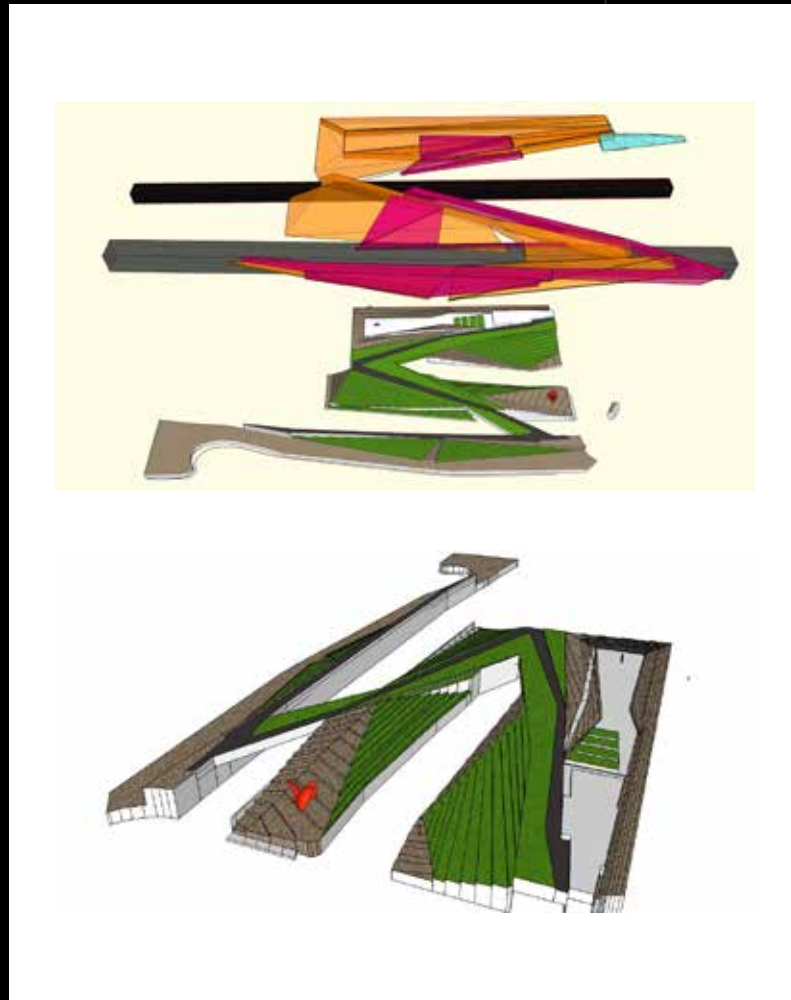
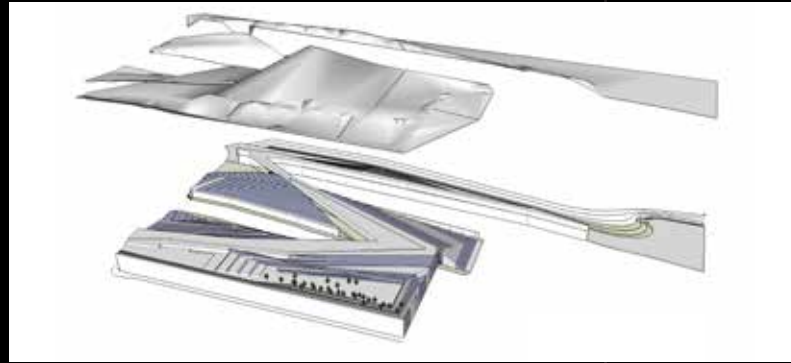
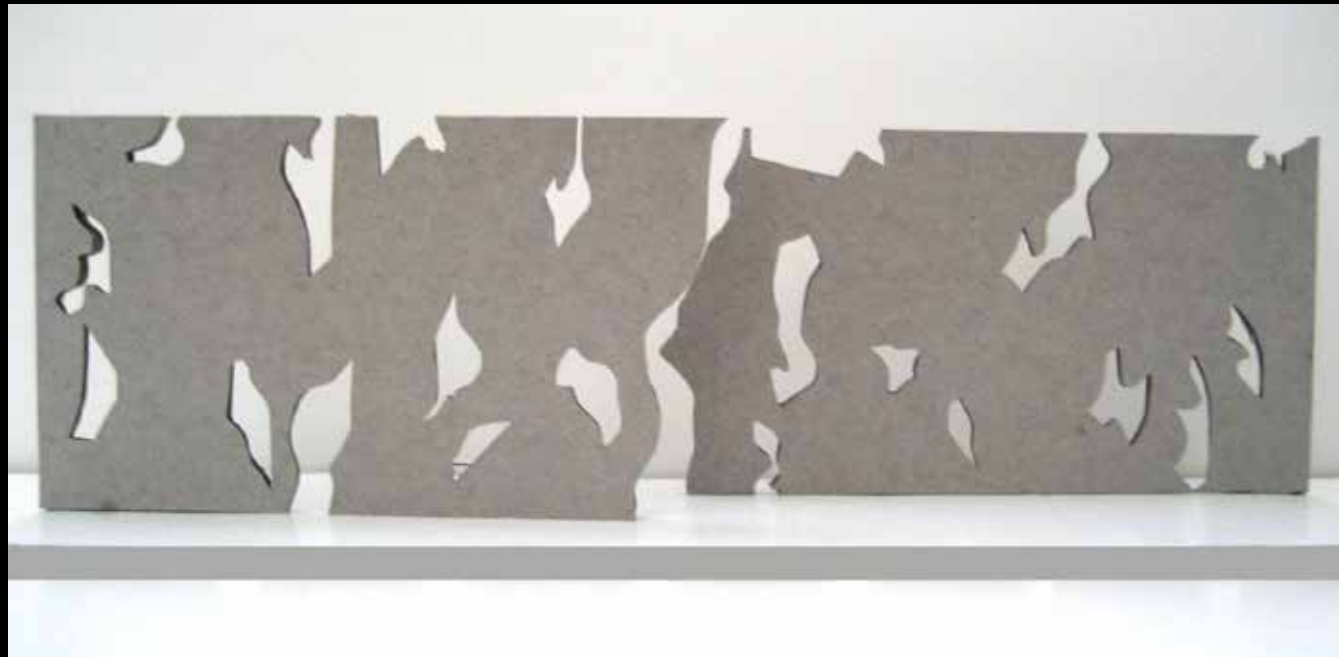
## Landform Abstraction Project

This drawings are based on overlays of the different maps of Arizona. The 3 maps used in this drawing were maps of the streets, buttes, and water channels. With these maps contour lines are created as an interpretation of each element that is observed on the map.

After the overlay processes are done for all 3 different maps, 1 is picked to begin a model and bring the lines to life. Each line on the drawing is transformed into the levels of elevation on the land. The project was done to better understand the forms of the land and the spaces that can be created.

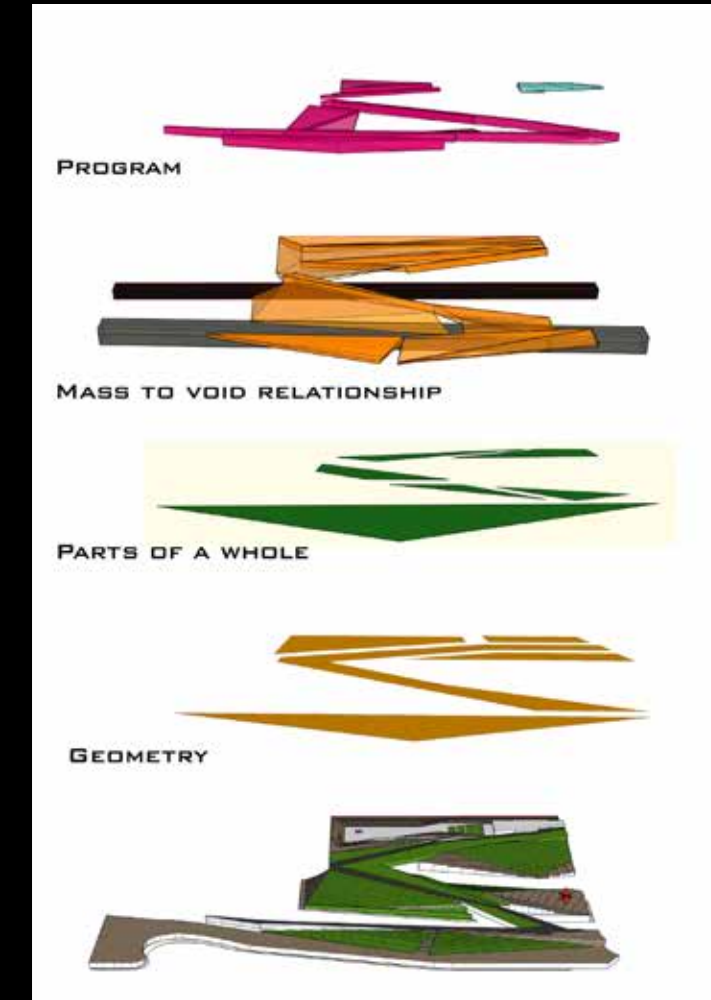
The main idea is to understand spaces and what can be design with that area while also thinking about how the human will interact with the space. A successful plan can be created when the basic human needs are understood applied to fit those needs.





## Form Exploration & Research

On the left side is an exploration of space, while designing an interactive wall. Shown front and back view. The wall is split in two and allows users to weave through it. The right side is a research project of the Olympic Sculpture Park in Seattle, WA. This project was to study landform and also learn 3d modeling.

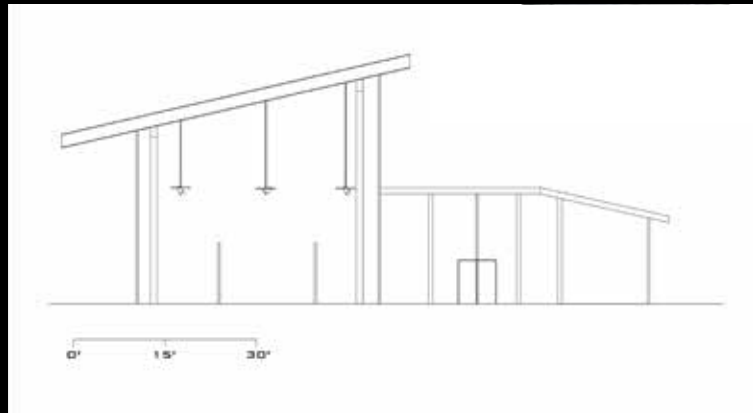




## Building Program & Model

Includes classrooms, multi-use gallery space, and office space. The center is oriented north and south to utilize indirect sunlight for the gallery and classroom spaces. The enclosed courtyard connect the visitors with the inside and outside.

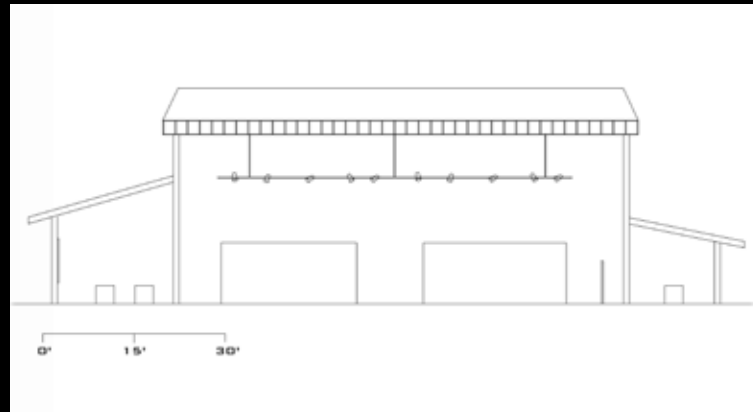
The model was constructed to see how guests would interact and experience the space with renderings.



## Outreach Center

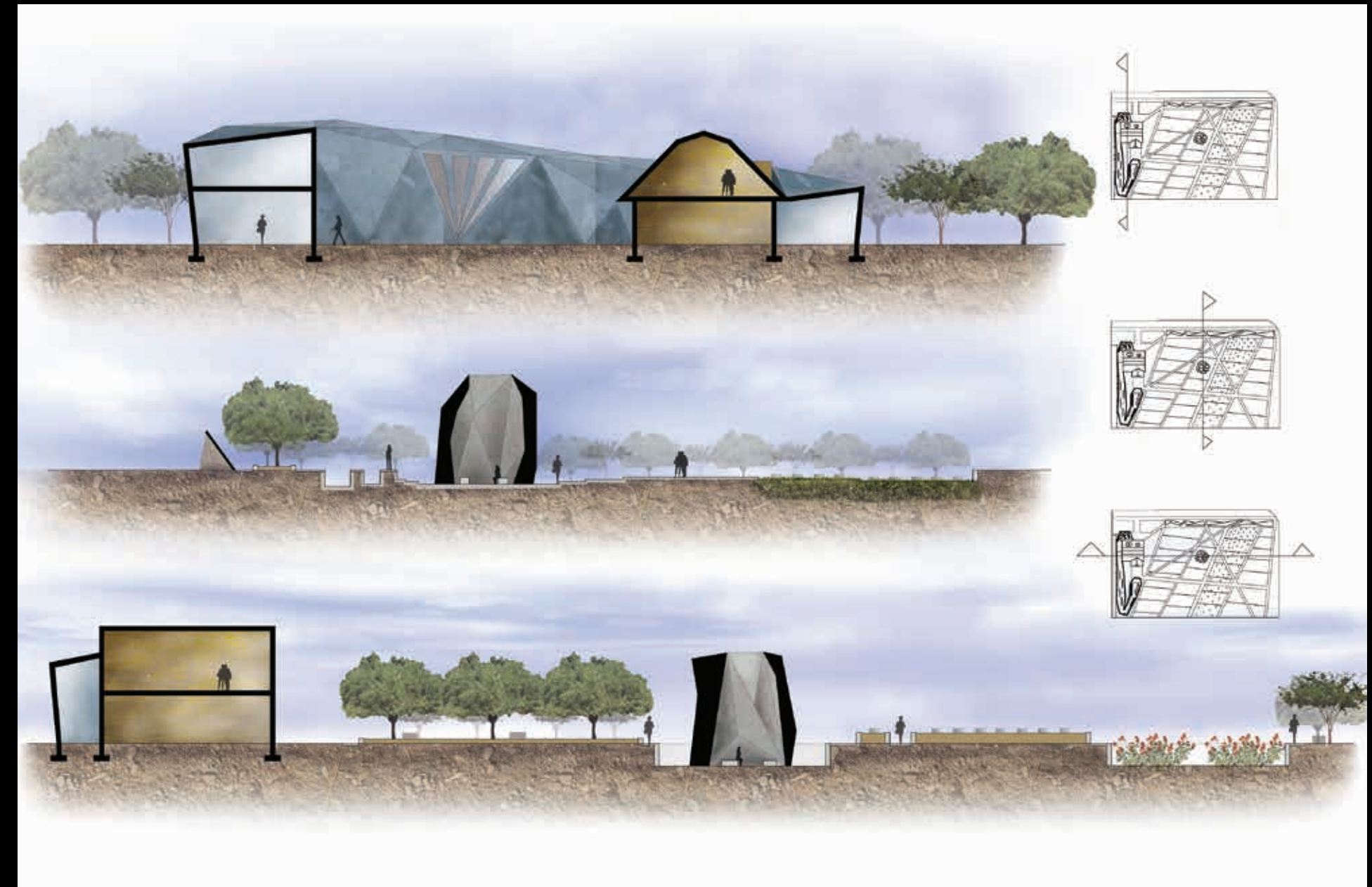
First was the development of the landscape based on research and lines of connections. Then a Location for the outreach was chosen.

The building was then developed with program and circulation in mind.





Pioneer & Military Memorial Park



Sections



### Connections to the Unmarked

Reflecting from the past and incorporating the new with the old. The development of this site came from the idea of revealing the unmarked gravestones from the cemetery. The inspiration of giving these tombstones recognition lead to the creation of this site. Through a dot compression analysis and the connection of these dots with lines, created the geometric shapes that were then used to create the memorial wall. The idea of using these geometric shapes then carried on into creating the reflection area, building and the entire landscape itself.





## Residential Landscape Design

The idea of the natural landscape merging and flowing into the structured landscape creating a place of Zen. Challenging the ordinary modern landscape style with the natural landscape style. The curved retaining walls are creating a higher ground that expresses an elegant flow into the ground level from a higher planter bed. Planters surround the house to amerce the building into the land. The desert ironwoods and weeping willows create a welcoming atmosphere for humming birds and bees.

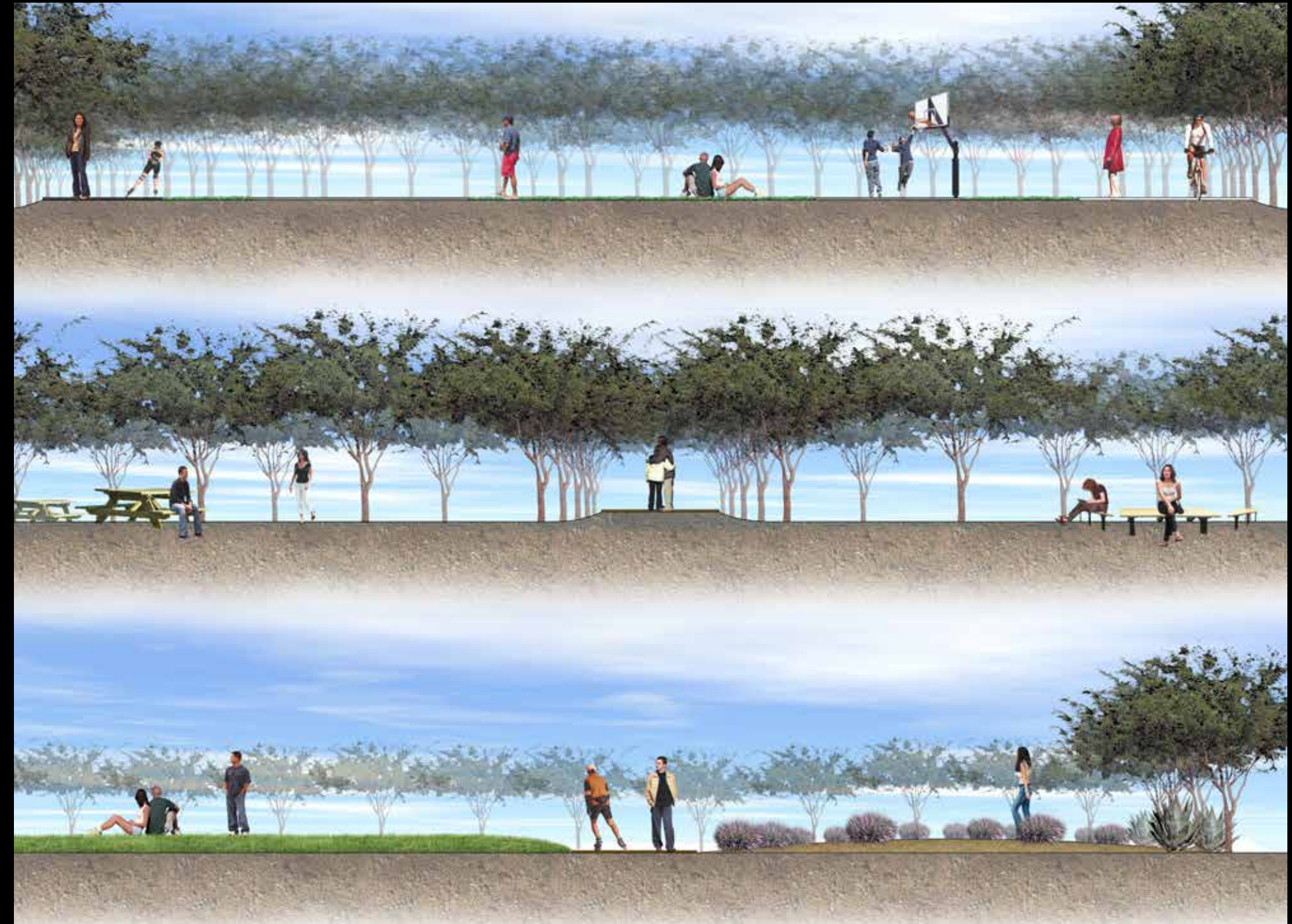




## Harmon Park: Pathways to a Common Ground

Each pathway is a celebration of the different groups of people that make up this world and brings this community together as one. The wavy paths show that life can take you in many directions so it is never straight and each path has a connection to the different activities within the park to show that no matter what a person likes to do, when we join as one we create a

powerful community that will decrease crime rates and create a better living environment for all. This idea encourages people to embrace the differences around them and learn from one another to enhance the melting pot we have today. Once we have embraced our differences, we then, can finally see people for who they really are.



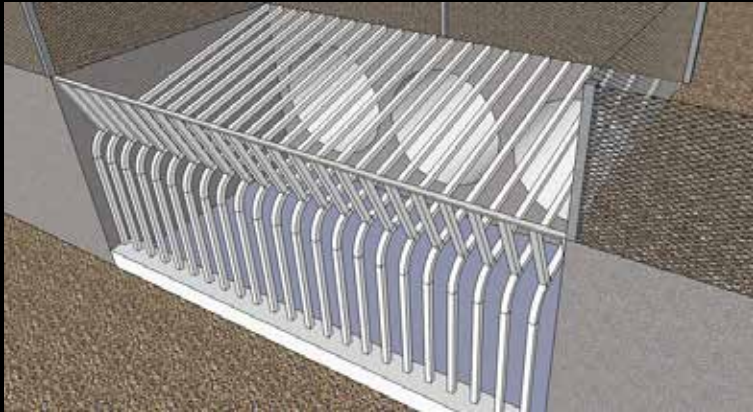
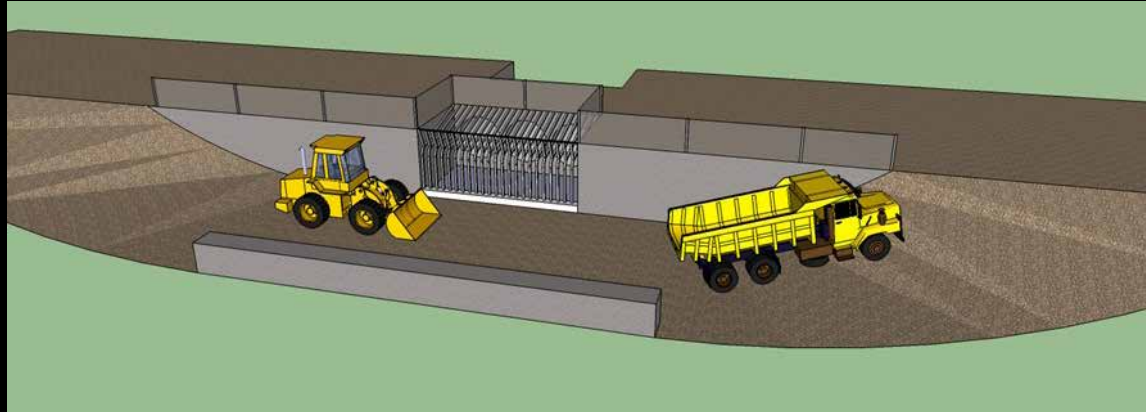
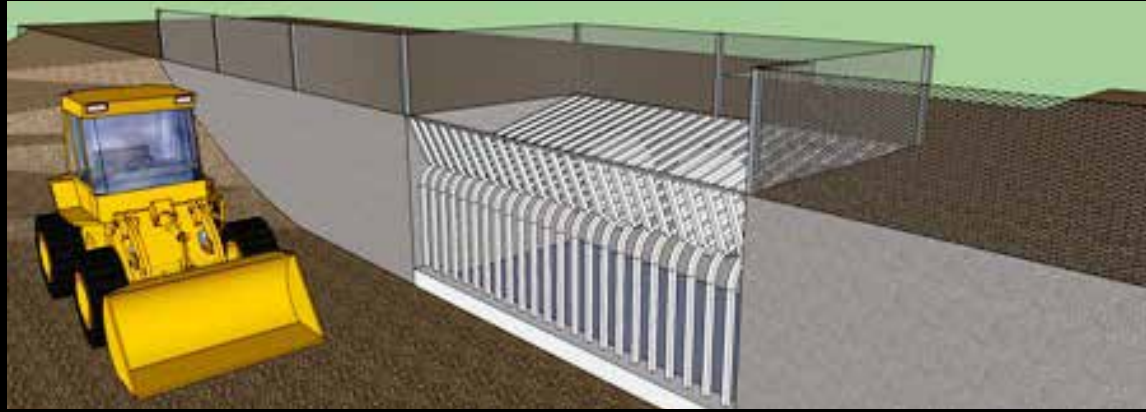


Harmon Park: Community garden  
pathway to gathering space



Harmon Park: Reflecting pool, amphitheater,  
and projection wall surrounded by community garden

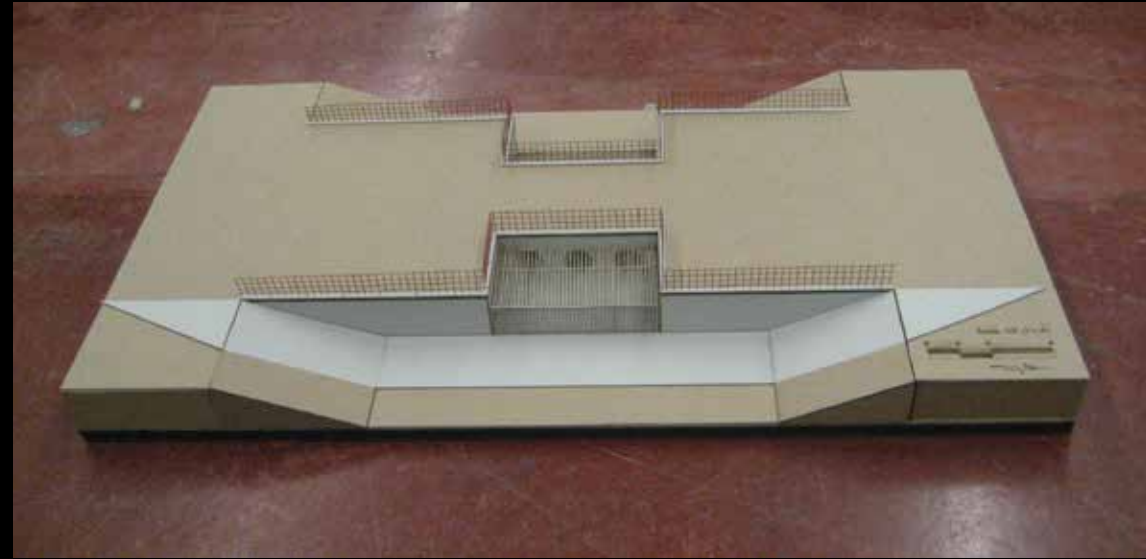




## Drainage Commissioned Model Build

This was a problem and solution design project by the ASU group of engineering students. They collected data from the area, designed the sketchup and then presented me with the project on what kind of model they needed me to build.



The hand crafted model was done with chipboard, laser cutting, wire mesh for the railing and drafting done on AutoCad.



Landscape Plan:



Utilizing low water use plants to create a vegetative environment within the desert landscape for everyone to enjoy. This is a place that can be used in multiple ways, such as: for social gathering events, outdoor exhibition space, casual place to study or just to enjoy the outdoors. The steps can be used as seating for a gathering within the amphitheater.

				Total	Notes
Symbol	Botanical Name	Common Name	Size	Quantity	
	<i>pistacia chinensis</i>	Chinese Pistache	15 Gal	14	Nursery Single-Trunk
	<i>rhus lancea</i>	African Sumac	15 Gal	15	Nursery Single-Trunk
	<i>Muhlenbergia capillaris</i>	Pink Muhly Grass	5 Gal	234	Nursery
	<i>Agave desmettiana variegata</i>	Dwarf Century Plant	5 Gal	71	Nursery
	<i>Ficus repens</i>	Climbing Fig	5 Gal	2	Nursery
	<i>Lantana x hybrida</i>	New Gold Lantana	5 Gal	37	Nursery

The Chinese pistache tree creating a bright highlighting walkway towards the college of design, inviting and catching the eyes of many people who pass by. During the winter time the tree will drop it's leaves and let in light to the area and shade the space in the summer. The pink muhly grass gives the walkway another emphasis with the gentle swaying grass lining the path. The African Sumac tree give the space varies amounts of shade and lively color during summer time. The agave desmettiana variegata is the space a lush look but using a desert plant so it is easy to maintain. The ficus repens is used for the overhead wood structure on the deck to create a vegetative structure for everyone to enjoy and give the plaza area a more green feel. Last but not least the New Gold lantana give the planters a vibrant accent to the space.

TRANG NHAN  
LTC 344-LANDSCAPE  
CONSTRUCTION II

Trang Nhan  
thuytrang200@yahoo.com  
LTC 344 Fall 2010  
Instructor: Dean Chambers



Not for Construction

Landscape  
Plan

REVISIONS:


Final Project  
ASU Neeb Plaza

L-LP| 11.0



Elevation

TRANG NHAN  
LTC 344-LANDSCAPE  
CONSTRUCTION II

Trang Nhan  
thuytrang200@yahoo.com  
LTC 344 Fall 2010  
Instructor: Dean Chambers



Not for Construction

Renderings

REVISIONS:


Final Project  
ASU Neeb Plaza

L-R.| 16.0

ASU Neeb Hall Landscape Design: Construction document of planting design and structure design.

Rendering & Elevation: Rendering of the multi-use interactive space. An Escape of the desert sun.



## Design Philosophy



**Design:** should fit the human needs and bring out the beauty of nature and enhance the land. It should work together with any element around it. Flowing together with any man-made structure and any natural element within the land. Creating a place where man and wildlife can live comfortably together with one another.

My goal is to make the landscape into a piece of art. A place where people can create their own memorable experiences and enjoy that moment.

I believe that good design is:

- \* designing with the human use in mind
- \* design with minimal expenses (using the resources around you)
- \* one which is unique and artistic
- \* one that embraces the future changes
- \* one that works with the wildlife around it or brings the wildlife back into our cities